



▶ **HANNAFIN**

limited

contractors



Music from <https://filmmusic.io>
"Easy Lemon" by Kevin MacLeod (<https://incompetech.com>)
License: CC BY (<http://creativecommons.org/licenses/by/4.0/>)



Introduction to Hannafin Contractors

▶ HANNAFIN

limited



▶ HANNAFIN

▶ WELCOME TO HANNAFIN CONTRACTORS

▶ HANNAFIN
limited

contractors



Thank you for this opportunity to present our business to you and to be considered as part of your delivery solution in undertaking your prestigious and sector leading projects across the UK

- ✓ Established way back in 2000, we have enjoyed **20 years** of successfully delivering complex projects for our customers year on year
- ✓ Experts in major civils, groundworks and wider construction projects.
- ✓ Our **purpose** is to provide a world class service to our customers and the communities we operate within, delivering a **high quality** project, **safely**, on **time** and on **budget**.
- ✓ Consistent **Great performance** and high ratings through various **client key performance management systems**.
- ✓ Promotion of **collaboration** and **early engagement** with our customers
- ✓ Driving **value** through **innovation**, **modern methods of working**, **program enhancing** strategies and **safe** working methodologies, **pre and post** award.
- ✓ At Hannafin we are specialists in **embracing challenges and delivering solutions**



Leadership/
Management



Competence



Legal
Compliance



Risk Profiling



Worker
Involvement



Quality
Control



▶ OUR

HANNAFIN

limited

contractors

accreditations



Near Miss and Lesson Learned

We are very proud of our HSE record with only minor incidents through our last trading year. Progress into 2020 is very similar. We would be happy to provide an update on the YTD progress to you upon request.

We do not currently maintain our environmental records in the same way as this is not prescribed within our current management procedures, however, we would still investigate all incidents and ensure they were properly recorded and filed in accordance with our ISO 14001 accredited procedures.

Last 3 years H&S stats

	2019	2018	2017
1) Accident: Fatality	0	0	0
2) Accident: Major Injury	0	0	0
3) Accident: Minor Injury Lost Time over 7 Days	0	0	1
4) RIDDOR: Disease	0	0	0
5) RIDDOR: Dangerous Occurrence	0	0	0
6) Accident: Minor injury Lost Time Less Than 7 Days	2	3	3
7) Accident: Minor Injury No Lost Time	9	8	7
8) Non Injury Accident: Damaged property	5	11	8
9) Near Miss	0	0	3
10) Unsafe Actions	0	1	1
11) Unsafe Condition	0	0	0
12) Red Card removed from Site	1	4	1
AIR (RIDDOR only)	0.00	0.00	432.90
AIR (RIDDOR only)	0.00	0.00	0.19
AIR (All Accidents)	8845.42	12162.45	8225.11
AIR (All Accidents)	3.78	5.20	3.52

Lessons learned example from induction

Ride On/Key Operated Plant

⇒ All ride-on plant must have the required daily check sheet completed **prior to use**.



⇒ All Ride on plant keys must be **attached** to the operator using the bungee provided.

⇒ Dumper driver must dismount and stand in a safe position whilst the dumper is being loaded, they must not remount until instructed to do so by the machine driver.

▶ OUR TEAM HAS

A WEALTH OF EXPERIENCE



Peter Hannafin
Managing Director
35 + years Industry experience
Multi Degree level qualified
IOSH / IMS Policy Owner

Rupert Archer
Construction Manager
30 + years Industry experience
Qualified Advanced Craftsman
SMSTS / IOSH

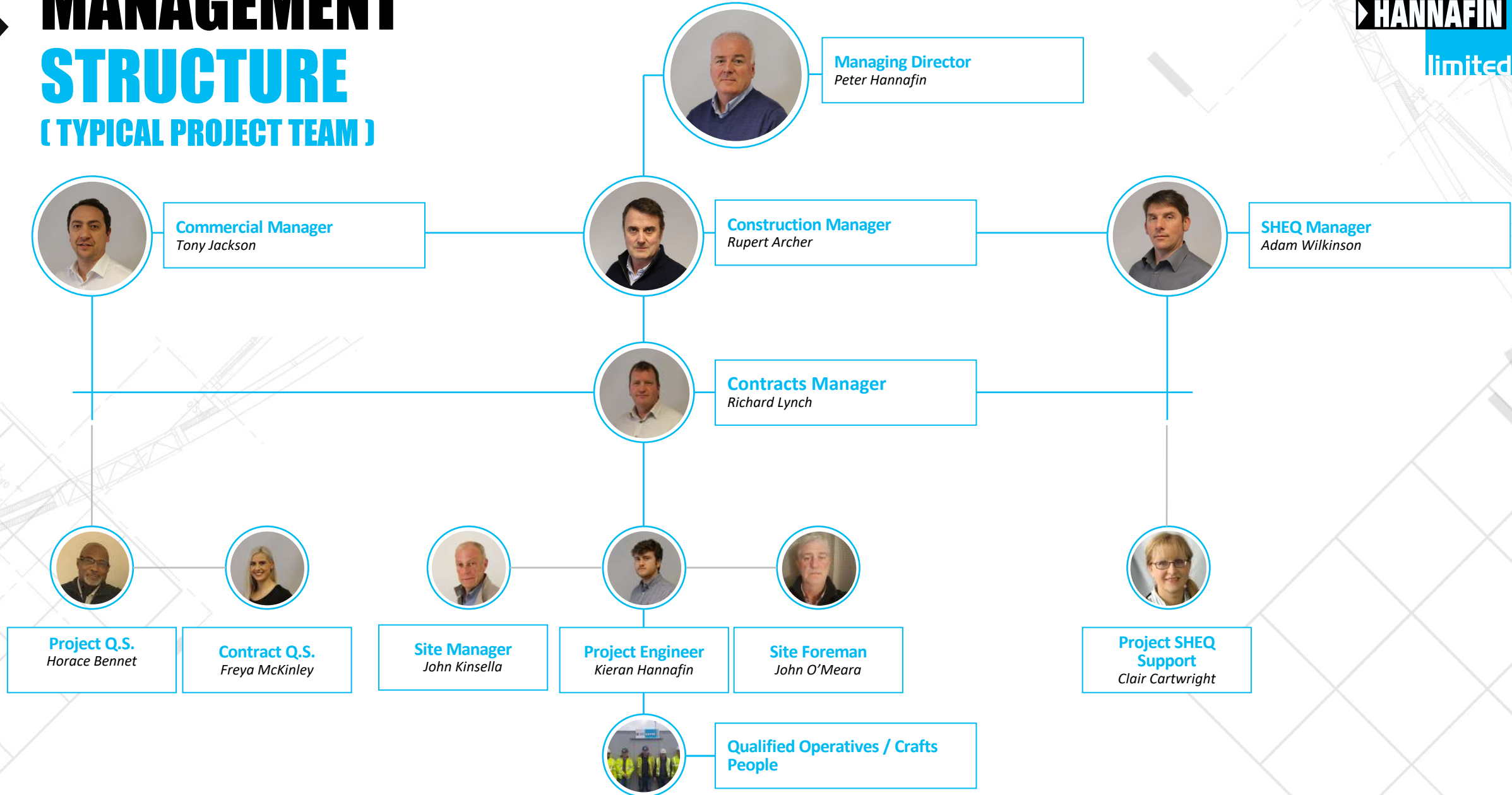
Tony Jackson
Commercial Manager
30 years Industry experience
MCIQB / HNC

Adam Wilkinson
SHEQ Manager
25 + years Industry experience
CAR-SOIL / CPCS
SMSTS / NEBOSH

Ciaran Considine
Head of Business Development
25 + years Industry experience
FCIPS / NEBOSH



MANAGEMENT STRUCTURE (TYPICAL PROJECT TEAM)

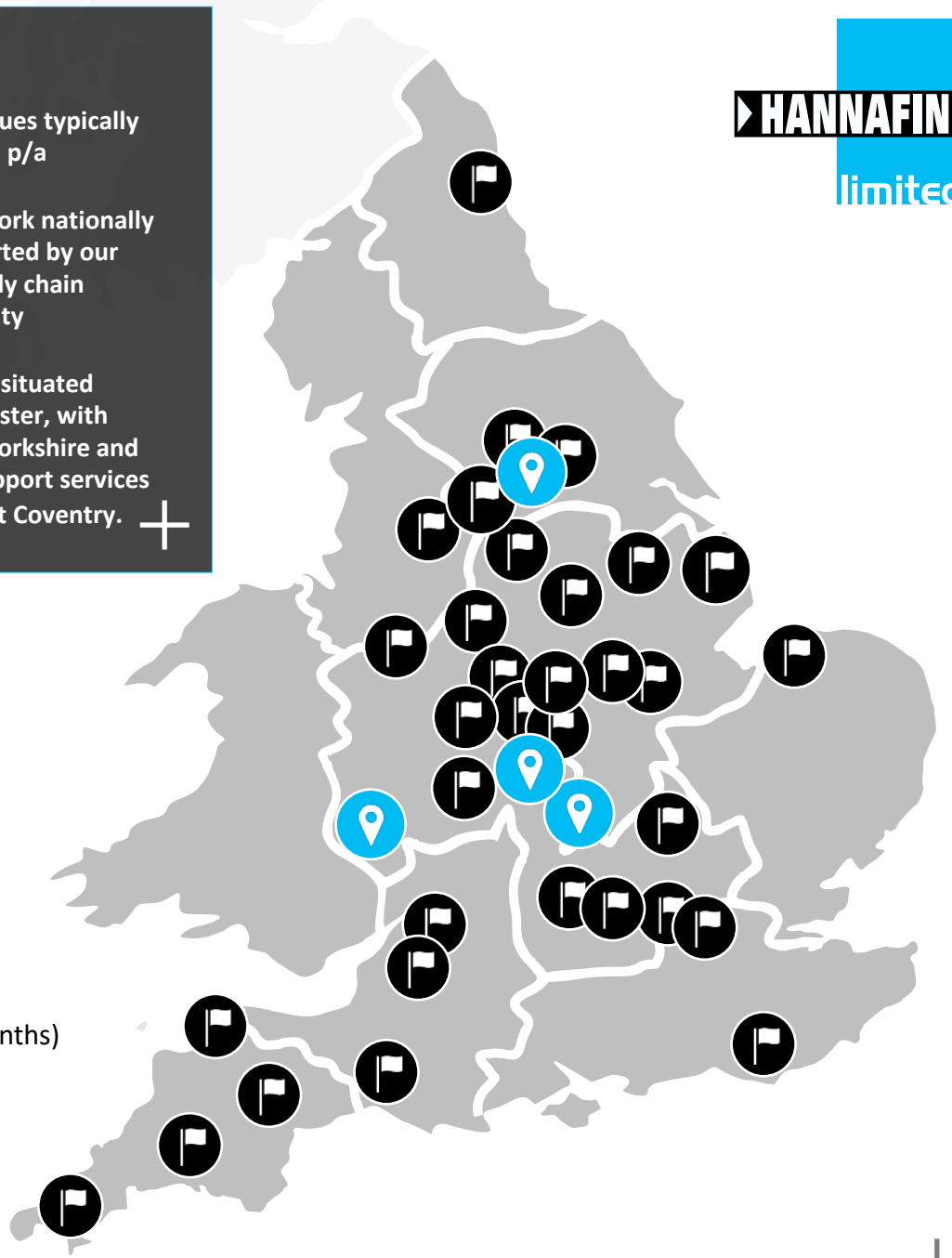




- We undertake contract values typically ranging from £1m to £15m p/a
- We have the capacity to work nationally throughout the UK, supported by our extensive network of supply chain partners and plant capability
- Our head office location is situated centrally within Kidderminster, with supplementary offices in Yorkshire and Daventry. We have our support services and plant depot situated at Coventry.



**FROM OUR
KIDDERMINSTER BASE,
WE OFFER FULL
NATIONAL
COVERAGE**



Recent Projects (18 months)



Office Locations



WE OFFER A WIDE RANGE OF SERVICES

HANNAFIN

limited

contractors



Earthworks
& excavation



Reinforced
concrete works



278
highway works



Hard
landscaping



Surfacing



Pre cast
concrete works



Bulk earthworks/
cut and fills



Drainage &
service installations



WE HAVE EXTENSIVE EXPERIENCE IN A VARIETY OF SECTORS

HANNAFIN

limited

contractors



Retail



Residential



Public Realm



Commercial



Leisure &
Health



Education



MOD/MOJ



Plant



WE HAVE A TRACK RECORD OF SUCCESSFUL PROJECTS

HANNAFIN

limited

contractors



Great Alne Park



JLR Test Facility



Orchard Centre



Student Acc Moberly



JLR HQ



PF2 Schools Midlands



Buxton Spa Derbyshire

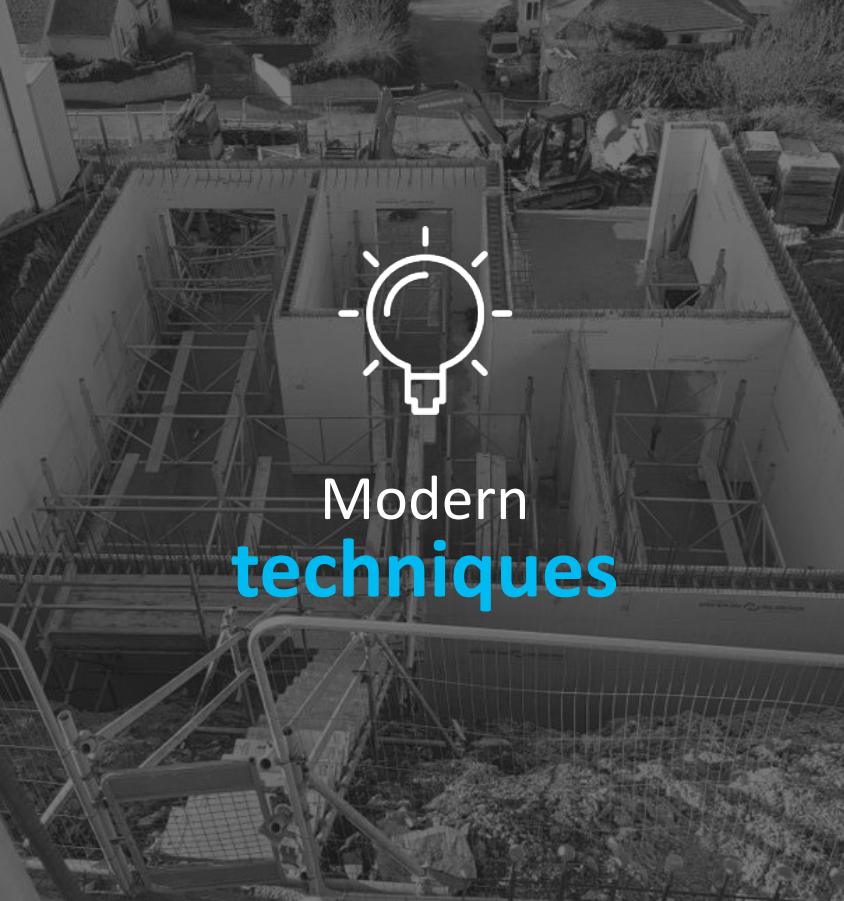


Midland Met Hospital



▶ WE STRIVE TO CONTINUALLY IMPROVE PERFORMANCE

▶▶▶▶ We are committed to invest in ◀◀◀◀



Modern techniques



Modern equipment



Highly trained staff

WE BUILD CLOSE WORKING RELATIONSHIPS TO DELIVER AN EXCEPTIONAL LEVEL OF CUSTOMER CARE

“By building trust through exceptional delivery, transparency and collaboration we create and nurture long-term, valued relationships with our clients, our supply chain and stakeholders”

A **cooperative**
approach



Proactive to
your needs



Flexible
where needed

HANNAFIN


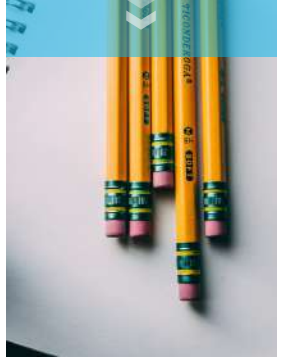
limited

contractors



▶ WE TAKE CORPORATE SOCIAL RESPONSIBILITY SERIOUSLY





Environment & sustainability




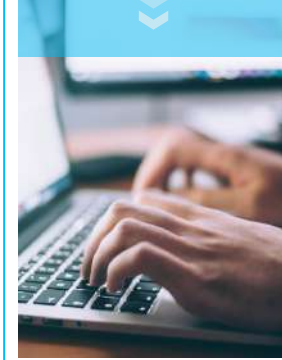
Health & Safety




Community



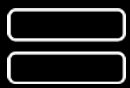
Modern Slavery




Whistleblowing



Bribery & Corruption



Equal Opportunities



SUPPORTING COMMUNITIES & VOLUNTARY WORK



COMPLEX PROJECT LOGISTICS AND DISTRIBUTION



▶ PUBLIC REALM MANAGEMENT & INTERFACE SUPPORT WORK





CAST IN-SITU CONCRETE STRUCTURES



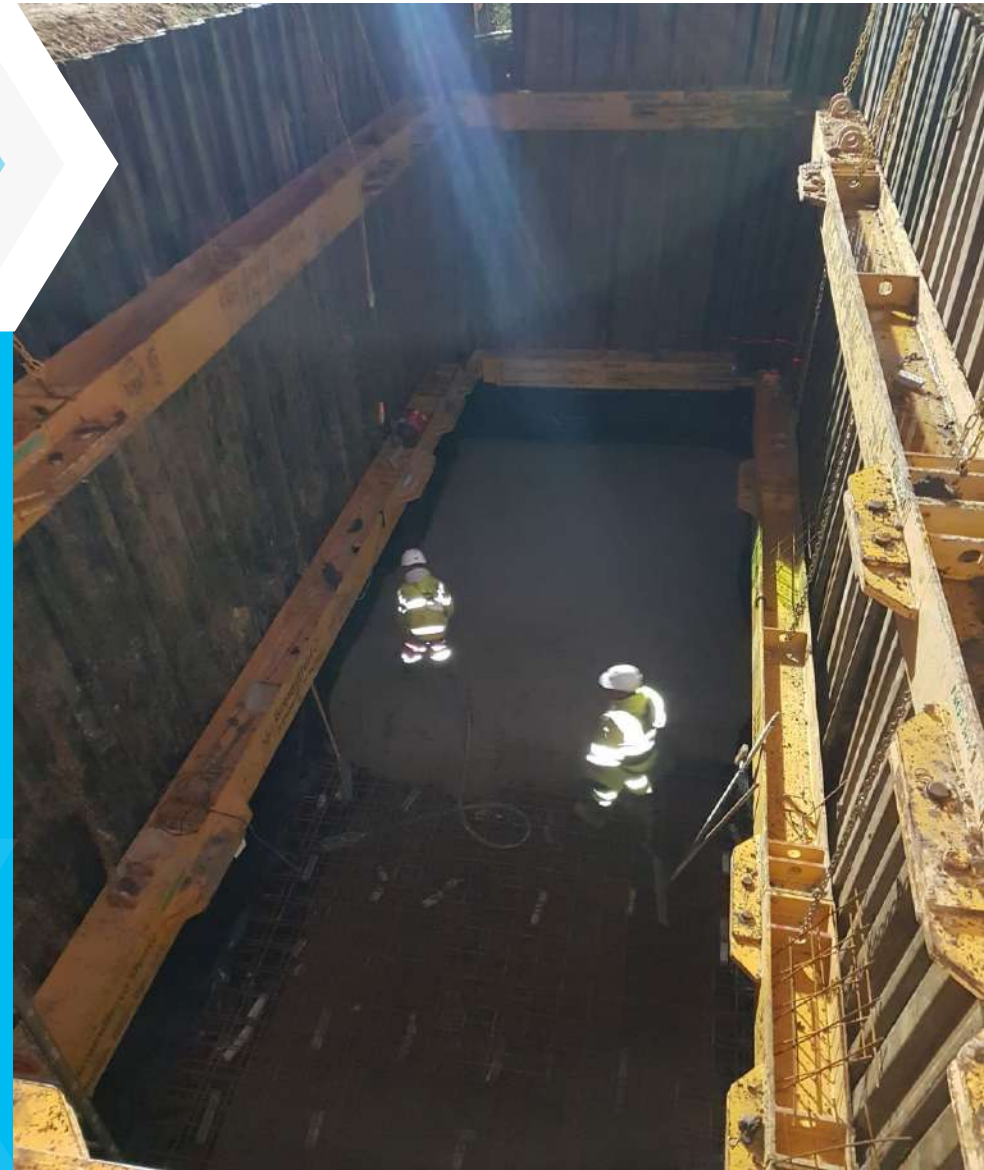
LARGE SCALE

DRAINAGE & ATTENUATION SYSTEMS

HANNAFIN

limited

contractors



WE CARRY A WIDE RANGE OF PLANT EQUIPMENT

HANNAFIN

limited

contractors



Excavators 25T-5T



9T Dumpers



Transport



Rollers



Tele-handlers



Skid Steers



Supply. Maintain. Transport



SUMMARY – WORKING WITH HANNAFIN CONTRACTORS



▶ WHY HANNAFIN?



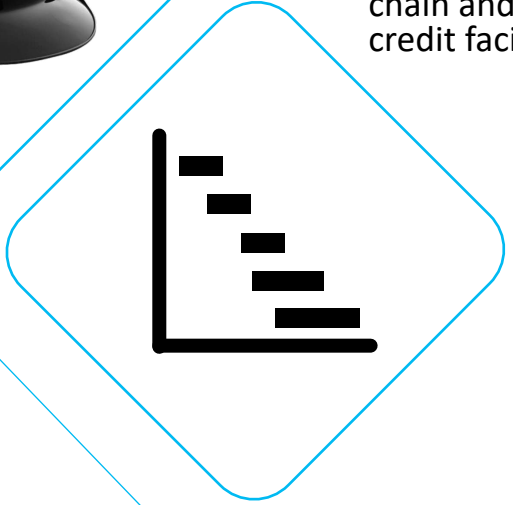
We WILL embrace the a values and cultures of our clients and have extensive experience working within challenging environments.

Early engagement and the ability to commit experienced resource



Robust management of Health, Safety, Program, Environment & Quality

Planning & Engagement – Embracing Innovations and modern methods of working



Sector leading , established Supply chain and extensive credit facilities



HANNAFIN

contractors
limited

CONTACT ME

Ciaran Considine

*22 Birchen Coppice Industrial Estate,
Stourport Road, Kidderminster, DY11 7QY*

ciaranc@hannafin.co.uk



[01562 827 895](tel:01562827895) / [07540560480](tel:07540560480)



www.hannafin.co.uk



We welcome you to visit our office to meet the team.

We are also please to arrange site visits and provide references should those be required